



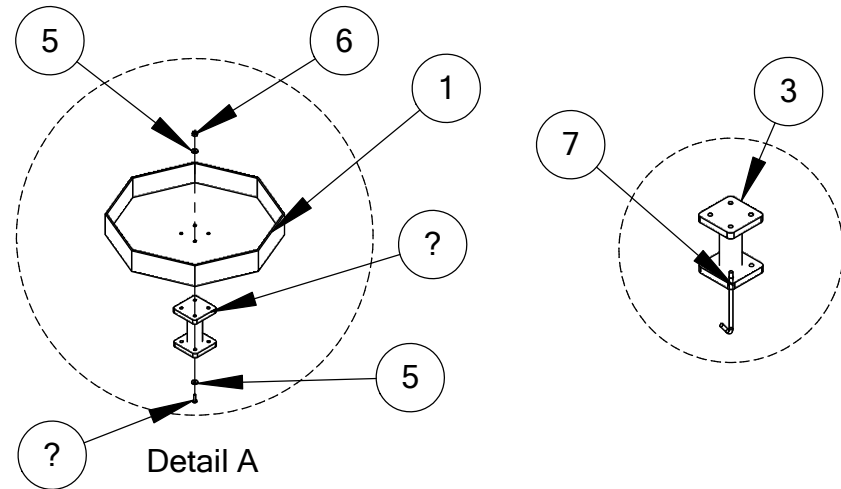
TRASH CAN W/LID SURFACE MOUNT

601-710
601-721

ITEM NO.	PART NUMBER	DESCRIPTION	QTY.
1	601-710	Trash Can	1
2	601-721	Flat Top Trash Can Lid	1
3	000-000	Surface Mount	1
4	000-000	Button Head Bolt	4
5	000-000	Washer	16
6	000-000	Lock Nut	8
7	000-000	Anchor Bolts	4

Assembly Instructions:

- Place mounting bracket (item 3) in desired location and mark the holes from the bracket plate onto the ground. After the holes have been marked, remove the bracket and drill the four holes 3.75" deep with 3/8" concrete bit and hammer drill
- Remove the nuts and washers from the anchor bolts (item 7) and place the anchor bolts into the holes.
- Set the mounting bracket onto the anchor bolts and attach it using the nuts and washers previously taken off. Tighten nut completely.
- Attach the trash can (item 1) to the mounting bracket by inserting 3/8" x 1-1/2" button head bolts, 3/8" washers and 3/8" lock nuts through the holes in the bottom of the trash can and into the mounting bracket. Tighten nuts.
- Finally if a lid was ordered you may place it on top of the trash can.



Detail A

Detail B

