

TOT HOUSE 1  
(902-803)



MATERIAL LIST:

ENTRY PANEL	(D)	(BLUE)	1
SIDE COUNTER PANEL	(B)	(BLUE)	1
UPPER SIDE PANEL	(E)	(BLUE)	1
LOWER SIDE PANEL	(C)	(BLUE)	1
BACK PANEL	(A)	(BLUE)	1
ROOF PANEL	(P)	(RED)	2
COUNTER PANEL	(J)	(RED)	1
FLOWER BOX	(N)	(RED)	1
LARGE SEAT	(F)	(RED)	1
LARGE STEP	(H)	(RED)	1
SMALL STEP	(I)	(RED)	1
LADDER/SLIDE	(M)	(RED)	1
LADDER SUPPORT TRIANGLES (L)		(RED)	2
FLOWER	(O)	(YELLOW)	1
SHUDDERS	(K)	(YELLOW)	2
PICKET FENCE	(G)	(YELLOW)	1
CORNER BRACKETS			47
5/16" X 1" BUTTON HEAD NUT			108
5/16" X 3/4" BUTTON HEAD BOLT			94
5/16" X 1 1/2" BUTTON HEAD BOLT			14
5/16" FLAT WASHER			108
3/8" FLAT WASHER			108
3/16" HEX WRENCHES			2

TOT HOUSE 1  
(902-803)

**SPECIFICATIONS:**

Panels: Made from 0.75" high-density polyethylene with UV inhibitor.

Corner Brackets: Nickel coated steel

Hardware: Nickel coated

Weight: 385 lbs

**INSTALLATION INSTRUCTIONS:**

**IMPORTANT:** *Read all instructions thoroughly before beginning installation.*

1. Loosely install corner brackets along sides of back panel (A) with 5/16" x 3/4" button head bolts, 5/16" button head nuts, 5/16" flat washer, and 3/8" flat washers. Begin the assembly of the back panel with the three brackets on your left and the four brackets on your right.
2. Attach the side counter panel (B) to the side of the back panel (A) with the three previously attached brackets.



3. Attach lower side panel (C) to the lower two brackets of back panel (A). Next install 2 corner brackets to the upper 2 holes of side counter panel and 2 corner brackets to the end 2 holes of the lower side panel.



TOT HOUSE 1  
(902-803)



4. Attach the front entry panel (D) to the front edge of the side counter panel (B) and lower side panel (C) with pre installed corner brackets from step 3.



5. Install 2 corner brackets to the upper 2 holes on the side of the front entry panel. Attach the upper side panel (E) above the lower side panel (C) with the 4 previously installed corner brackets.

TOT HOUSE 1  
(902-803)



6. Install 3 corner brackets in the lower 3 holes of the back panel (A) and 1 bracket on the side counter panel (B) near the back towards the back panel (A). Now attach the large seat (F) on these 4 brackets with 5/16" x 3/4" bolt, 5/16" x 1" nut, 5/16" washer, and 3/8" washer and tighten all hardware along this side, making sure the corners are flush with one another.



7. Next remove the 2 bolts from the front of the lower side panel (C) and install 2 corner brackets on the outside. Now install the picket fence (G) to these brackets then install 1 corner bracket in the



TOT HOUSE 1  
(902-803)

remaining hole on the picket fence and 2 corner brackets in the lower 2 holes of the lower side panel (C). These 3 brackets will support the small step.



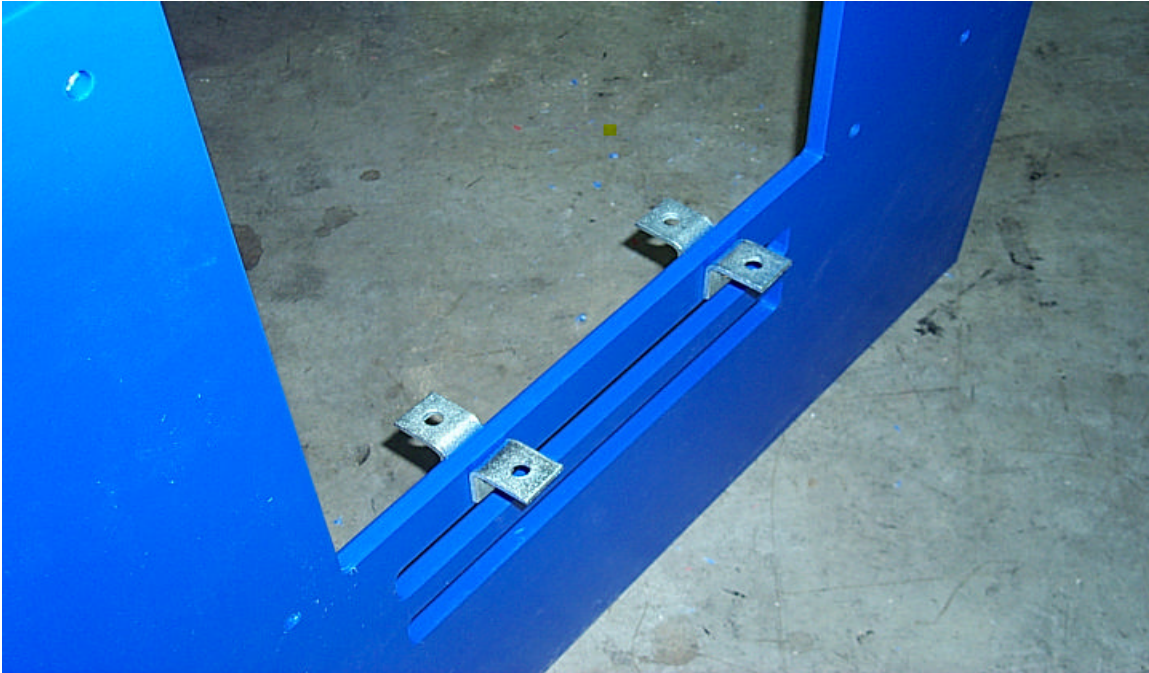
8. Next install 2 corner brackets to the upper 2 holes in the lower side panel (C) and 1 corner bracket in the lower hole of the front entry panel (D). These brackets will support the large step (H). Once these brackets are install place the small step (I) on the corner brackets from step 7 and install the large step on the remaining 3 corner brackets. Tighten all hardware on this corner.



9. Now install the flower pot (N) and the flower (O) to the front entry panel using 5/16" x 1 1/2" button head bolts, 5/16" x 1" button head nuts, 5/16" flat washers, and 3/8" flat washers.

TOT HOUSE 1  
(902-803)

10. Next install 4 corner brackets to the 2 holes in the side counter panel (B). See picture below.



11. Now install the counter panel (J) to the 4 brackets from step 10 and install the 2 window shutters (K) to the 4 holes on each side of the counter panel. The counter panel uses 5/16" x 3/4" button head bolts, 5/16" x 1" button head nuts, 5/16" flat washers, and 3/8" flat washers. The window shutters use 5/16" x 1 1/2" button head bolts, 5/16" x 1" button head nuts, 5/16" flat washers, and 3/8" flat washers.





TOT HOUSE 1  
(902-803)

12. Now remove the 2 bolts holding the lower side panel to the back panel (A) and install 2 corner brackets in the same place with the corner turning toward the front of the structure. Now install 2 more corner brackets to the remaining 2 holes in the lower side panel with the corner turning towards the back of the structure. See picture below. These brackets are for the ladder support triangles (L).



13. Now install the ladder support triangles to the previously installed corner brackets and then install 4 corner brackets to the remaining 4 holes in the triangles with the brackets facing to the inside.





TOT HOUSE 1  
(902-803)

14. Now attach the ladder (M) to the 4 corner brackets and tighten all hardware.



15. Install 8 corner brackets to the 8 remaining holes in the back panel (A) and the front entry panel (D). These holes are located along the top edge and will be used for the roof panels (P).





TOT HOUSE 1  
(902-803)

16. Now install 1 of the 2 roof panels with 5/16" x 3/4" button head bolts, 5/16"x 1" button head nuts, 5/16" flat washers, and 3/8" flat washers. Be sure that the beveled edge is toward the peak of the roof. Do not tighten at this time. Repeat for the second roof panel. Once both panels are in place align both roof panels together, flush at the top and tighten all hardware. This can be difficult and may take a couple of adjustments to make them meet tightly together.



**MAINTENANCE:**

Periodically check all hardware for tightness, and tighten if necessary. If any parts are found to be faulty immediately discontinue use until the part/parts have been repaired or replaced. Check for any gouges, breaks, or cracks on plastic. Check all areas for integrity. Keep all areas clean, clean with **SOAP & WARM WATER ONLY.**