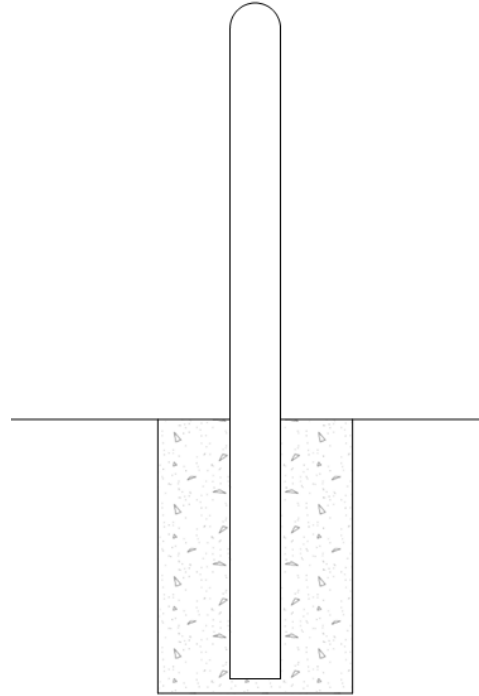


Post Installation

STEP: 1

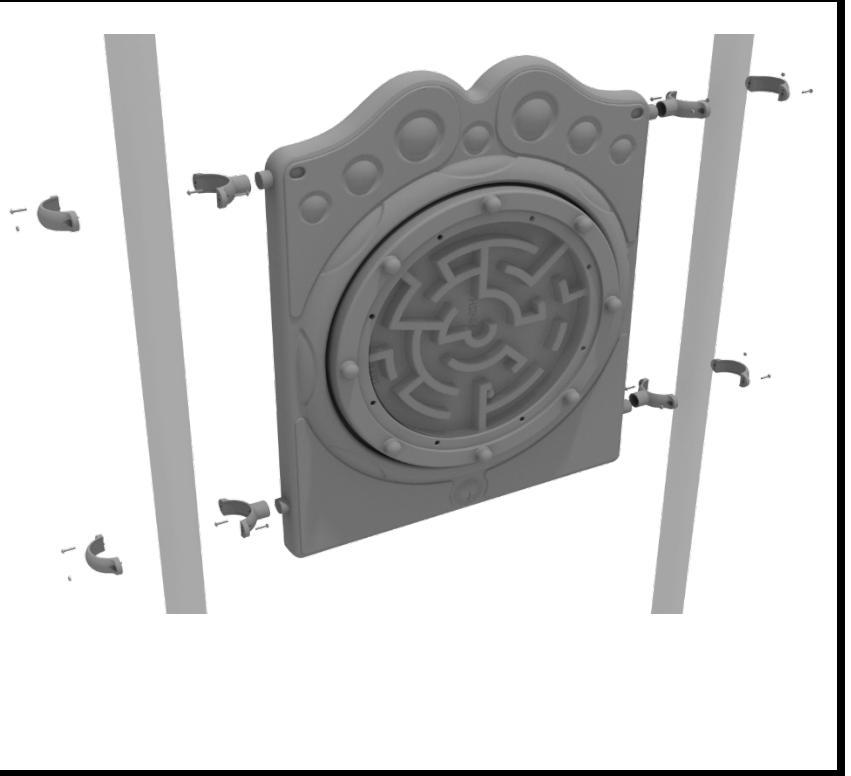
Refer to the General Installation guide footing information and dig proper holes for the 3.5-inch support posts. **DO NOT CEMENT POSTS INTO PLACE UNTIL THE ENTIRE STRUCTURE IS ASSEMBLED.**



4.5-inch Ball Maze Installation

STEP: 1

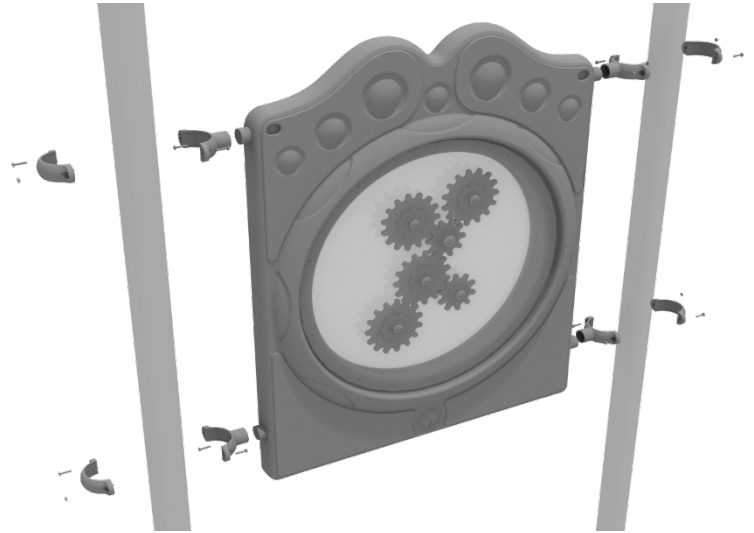
Connect the Ball Maze panel to the designated post using four (4) 4.5-inch tube clamps.



4.5-inch Gear Panel Installation

STEP: 1

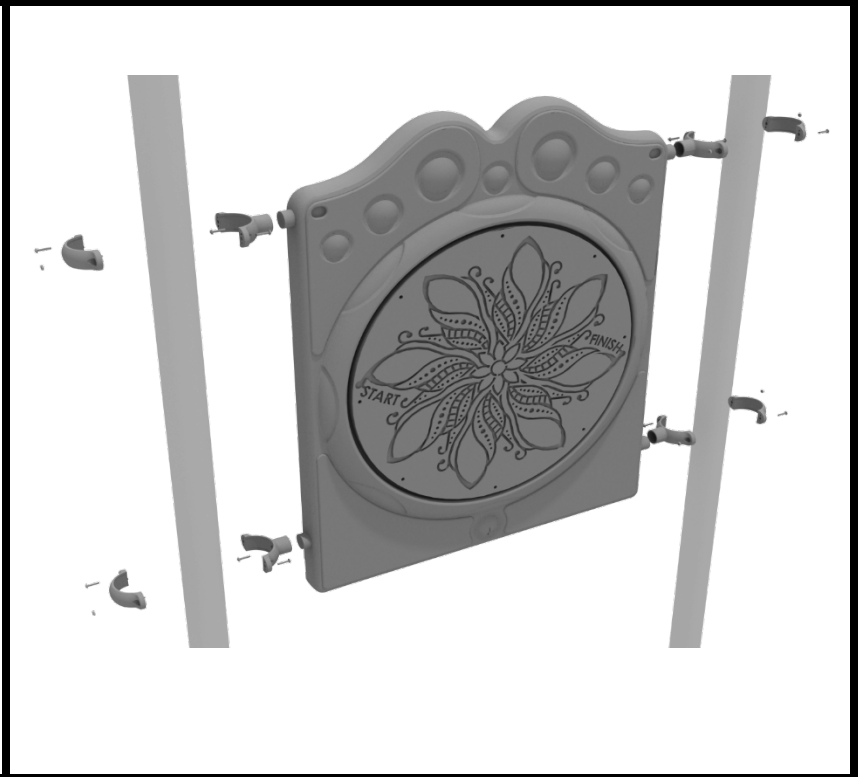
Connect the Gear panel to the designated post using four (4) 4.5-inch tube clamps.



4.5-inch Maze Panel Installation

STEP: 1

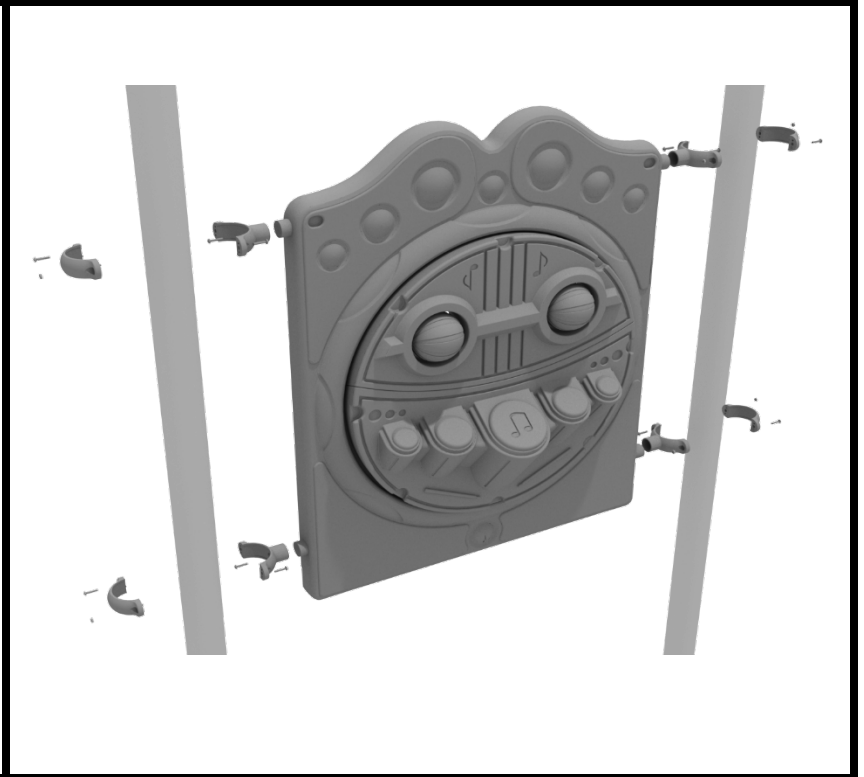
Connect the Maze panel to the designated post using four (4) 4.5-inch tube clamps.



4.5-inch Percussion Panel Installation

STEP: 1

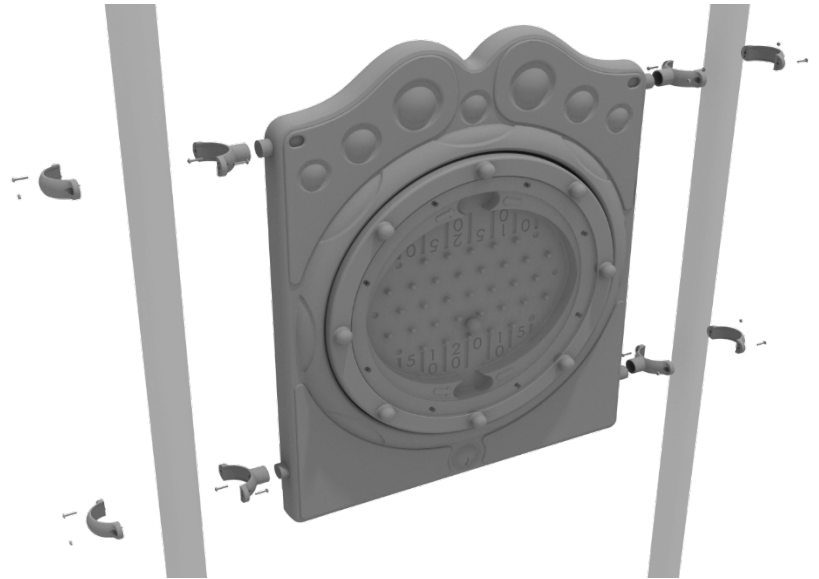
Connect the Percussion panel to the designated post using four (4) 4.5-inch tube clamps.



4.5-inch Plinko Panel Installation

STEP: 1

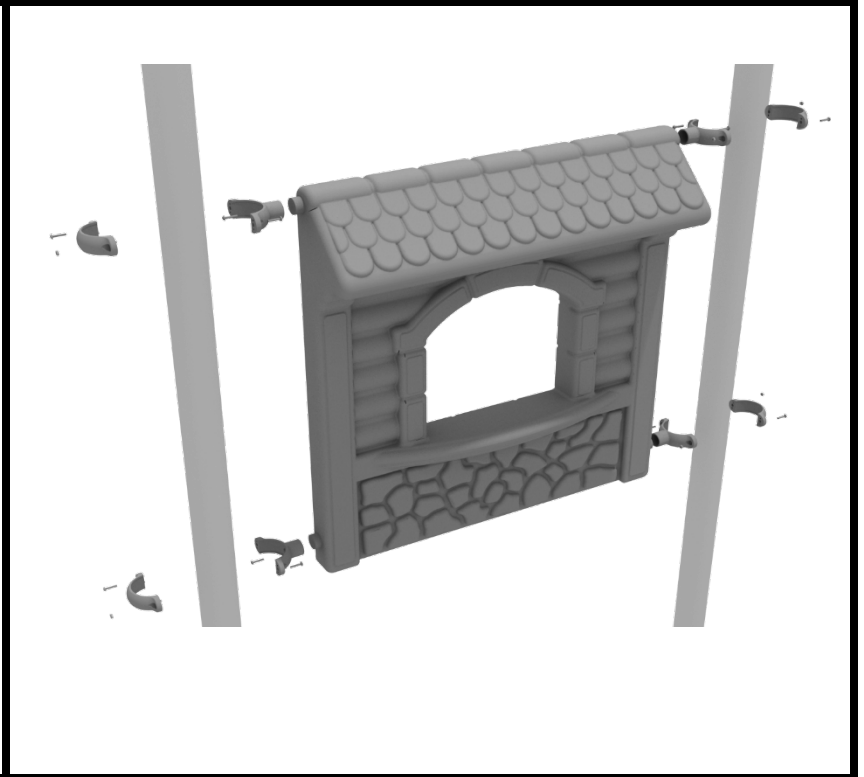
Connect the plinko panel to the designated post using four (4) 4.5-inch tube clamps.



4.5-inch Store Panel Installation

STEP: 1

Connect the store panel to the designated post using four (4) 4.5-inch tube clamps.



4.5-inch XO Panel Installation

STEP: 1

Connect the XO panel to the designated post using four (4) 4.5-inch tube clamps.

